



**BABYBROK AFFILIATE  
MARKETING  
WHITEPAPER V 1.0**

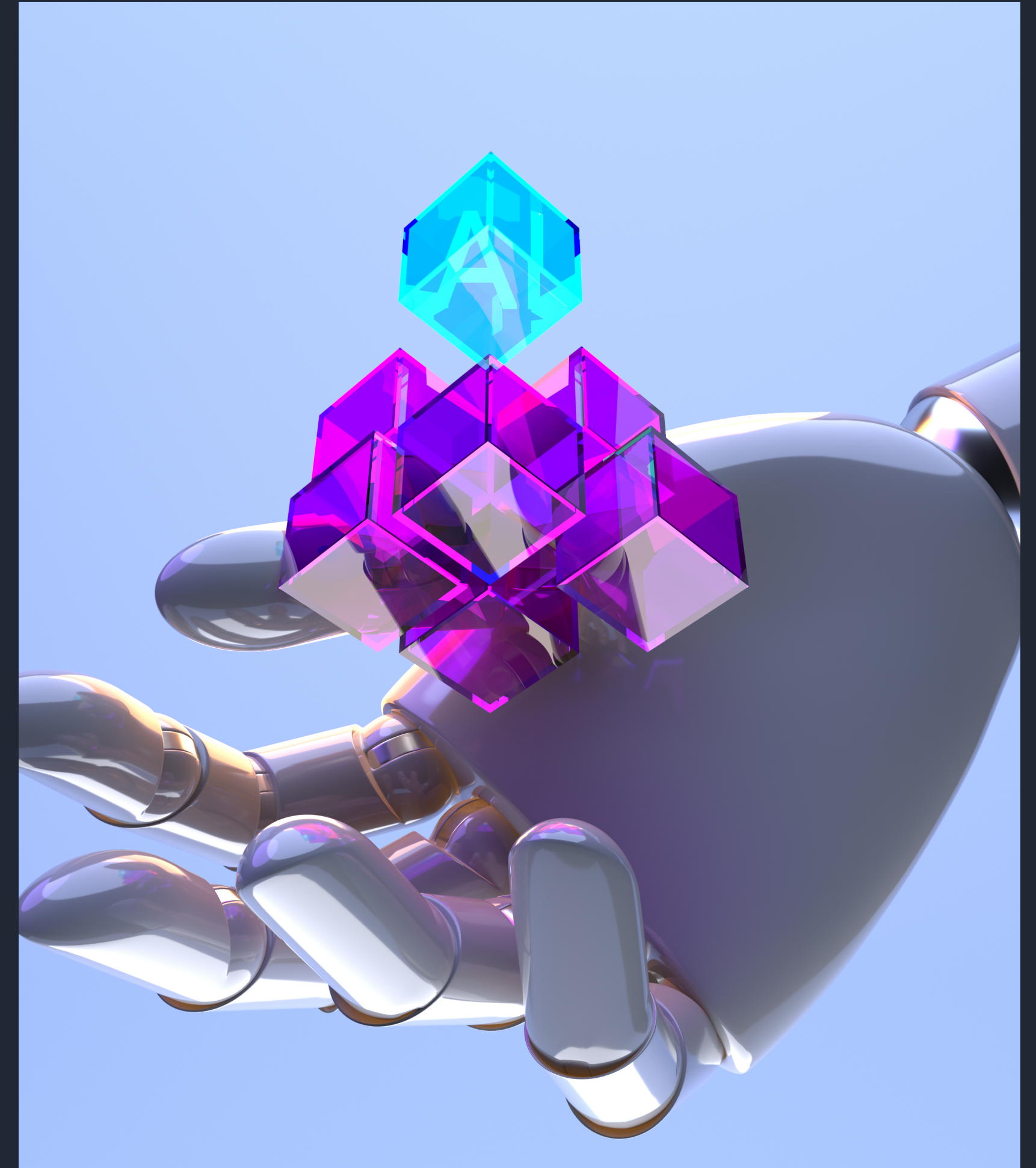


# DECENTRALISED AFFILIATE MARKETING WITH BABYGROK AI

**D**ecentralized affiliate marketing by BabyGrok AI is built on a smart contract that provides you with maximum security, fast payouts and all added advantages of blockchain technology.

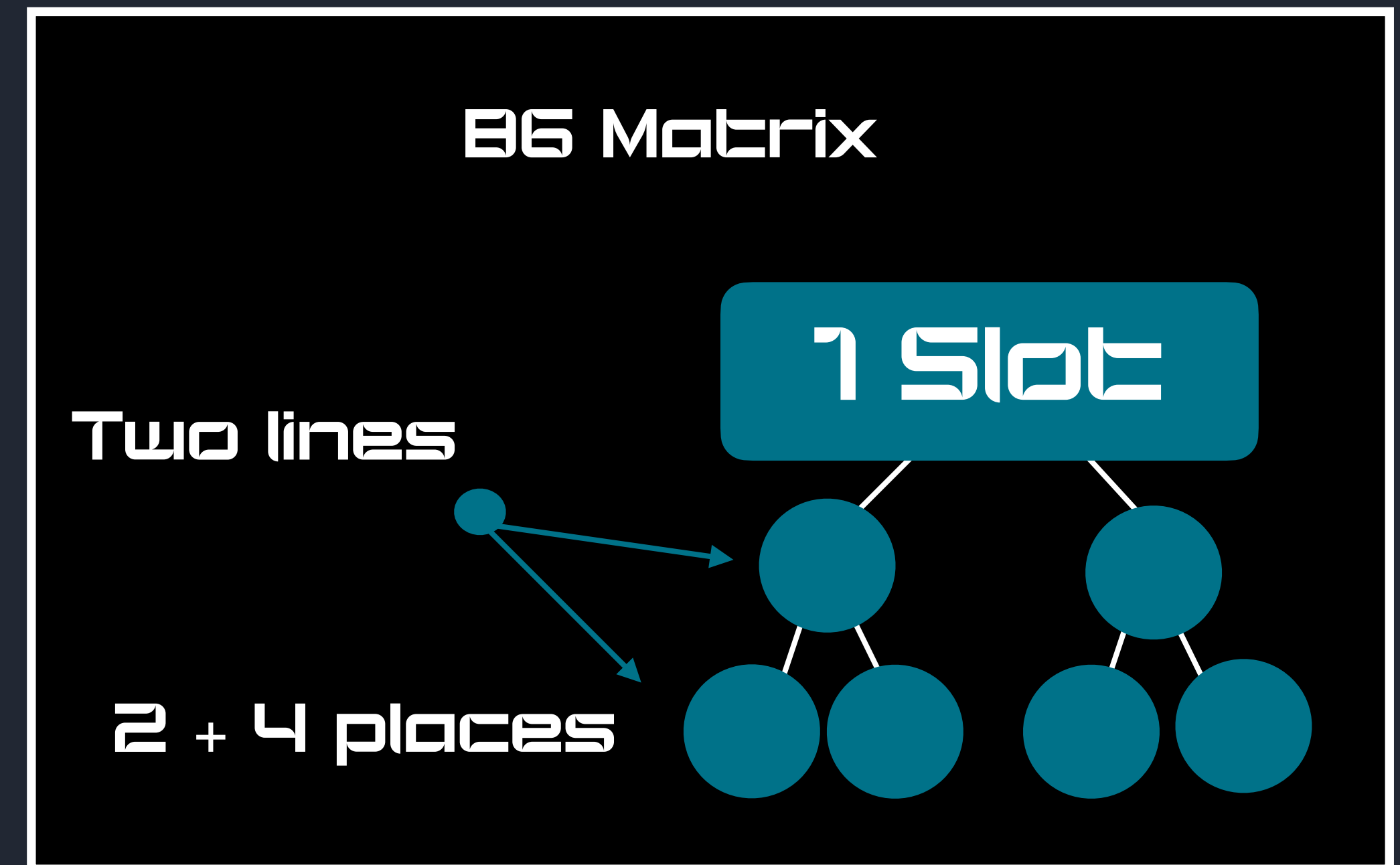
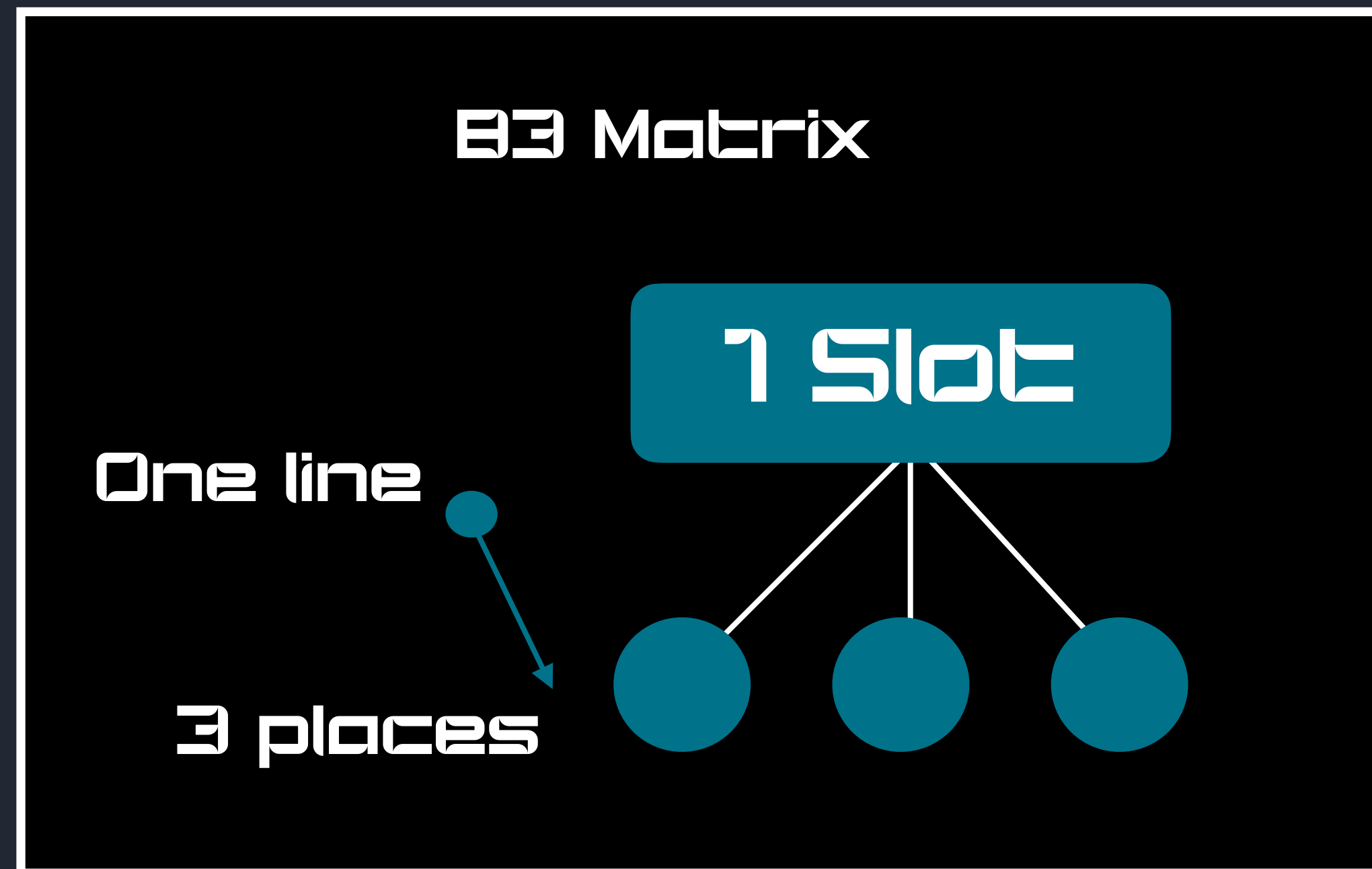
This decentralised application is available on popular Binance Smart Chain using USDT (BEP20) stable coin for investment and earn multifold referral rewards.

This dApp will help attract referrers and affiliate marketers to the project, increasing its reach and value at the same time.





# How does BabyGrok Matrix Work?

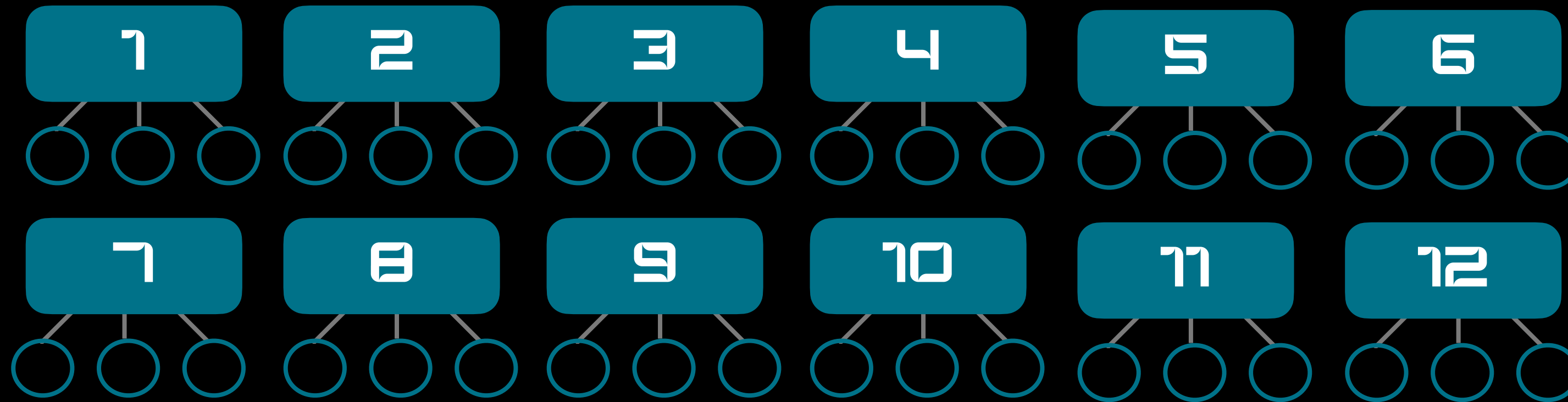


BabyGrok Matrix is a closed system, without deadlines for slots, with a limited number of places and an unlimited number of reinvests. In the matrix, the referral link is fixed with the person who invited you. You always follow your superior partner, to each of the slots s/he activated.

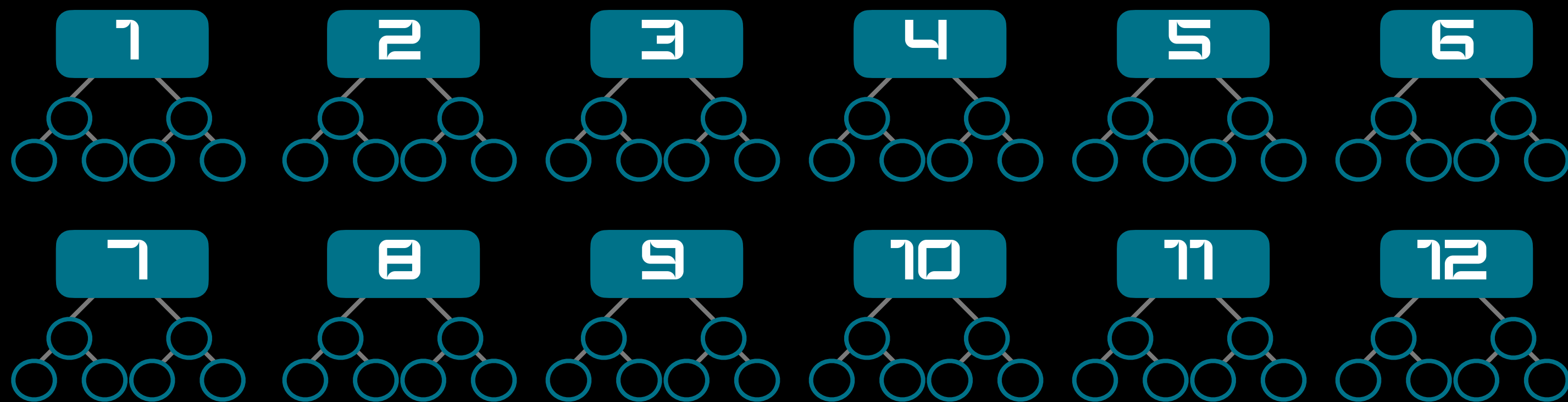
In the B3 Matrix program below you are three places in one line, whereas in B6 Matrix program below you are two lines - 2 places in first line and 4 places in the second line. When you register in the matrix referral program, you open both programs simultaneously.

# What are referral slots?

## B3 Matrix



## B6 Matrix



In each of these two referral matrix, B3 and B6, there are 12 slots. All similar and work in the same way.

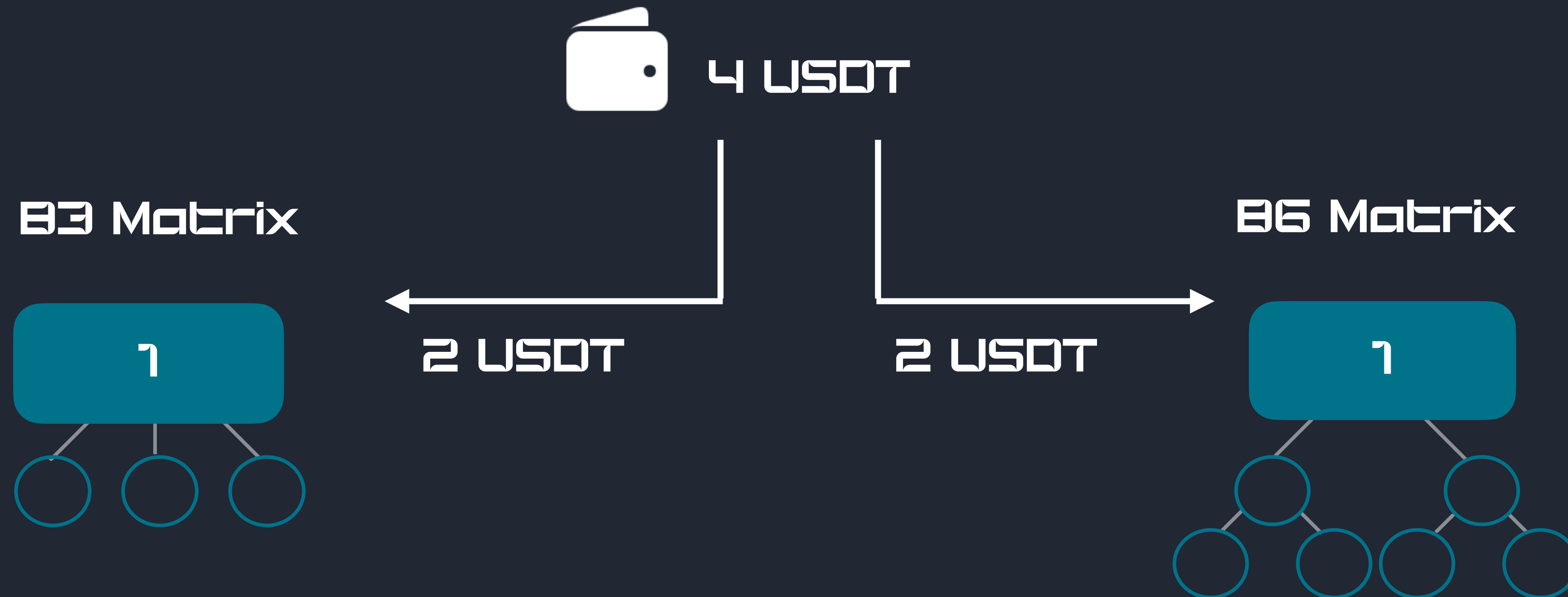
Each subsequent slot is 2x more expensive than the previous one. Both referral income and profits from them are twice as high.

How many slots can be activated immediately? As many as you can! All twelve can be activated by paying the amount of each level in USDT (BEP20) stable coin.

These levels have no expiration date, so you need not fight against time. All active slots move and bring you compounded affiliate revenue in parallel.

# How registration works

The first slots of each matrix costs 'x' amount of tokens. They are bought together when you register into the program for the first time. Accordingly, the start to the matrix is generally '2x' amount of tokens. You can purchase all subsequent slots separately, in order from the lower to the higher. It is only possible to buy the third slot, if you have second slot active and so on.



# B3 REFERRAL MATRIX

All partners in your slots of the B3 Matrix program are your personally referred affiliate partners. When you invite partners, they take places under you. The distribution of payments when filling out the matrix automatically occurs as per the following guidelines:



The first referred affiliate partner takes a place under you and 100% payout goes to your personal wallet.

The second referred affiliate partner takes a place under you and 100% payout goes to your personal wallet.

The third referred affiliate partner takes a place under you and your spline receives 100% payout, but in the form of **REINVEST**.

**REINVEST** opens the same slot for you again, and you continue to receive income from it. Reopening the slot, you take next free place in your upline/ superior partner's slot. Accordingly, 100% of the reinvestment is transferred to your spline.

# B6 REFERRAL MATRIX



In parallel, the B6 Matrix program also works for you, here a flow of payout is organised from bottom to top. This program helps you build a team of affiliate marketers. There may be partners under you that you have invited, or your downline has invited, or mixed of both.



Affiliate partners who take two places below you in the first line are two places in the second line of your upline and 100% payout from these two places of to your upline.



You receive income from the second line, 100% from four slots, of these, 3 payments go instantly to your wallet.



The last payout is the closing slot, and it also makes a reinvest, buying you the same slot again, and the payment of this slot is transferred to your upline.



# REINVESTMENT EXPLAINED

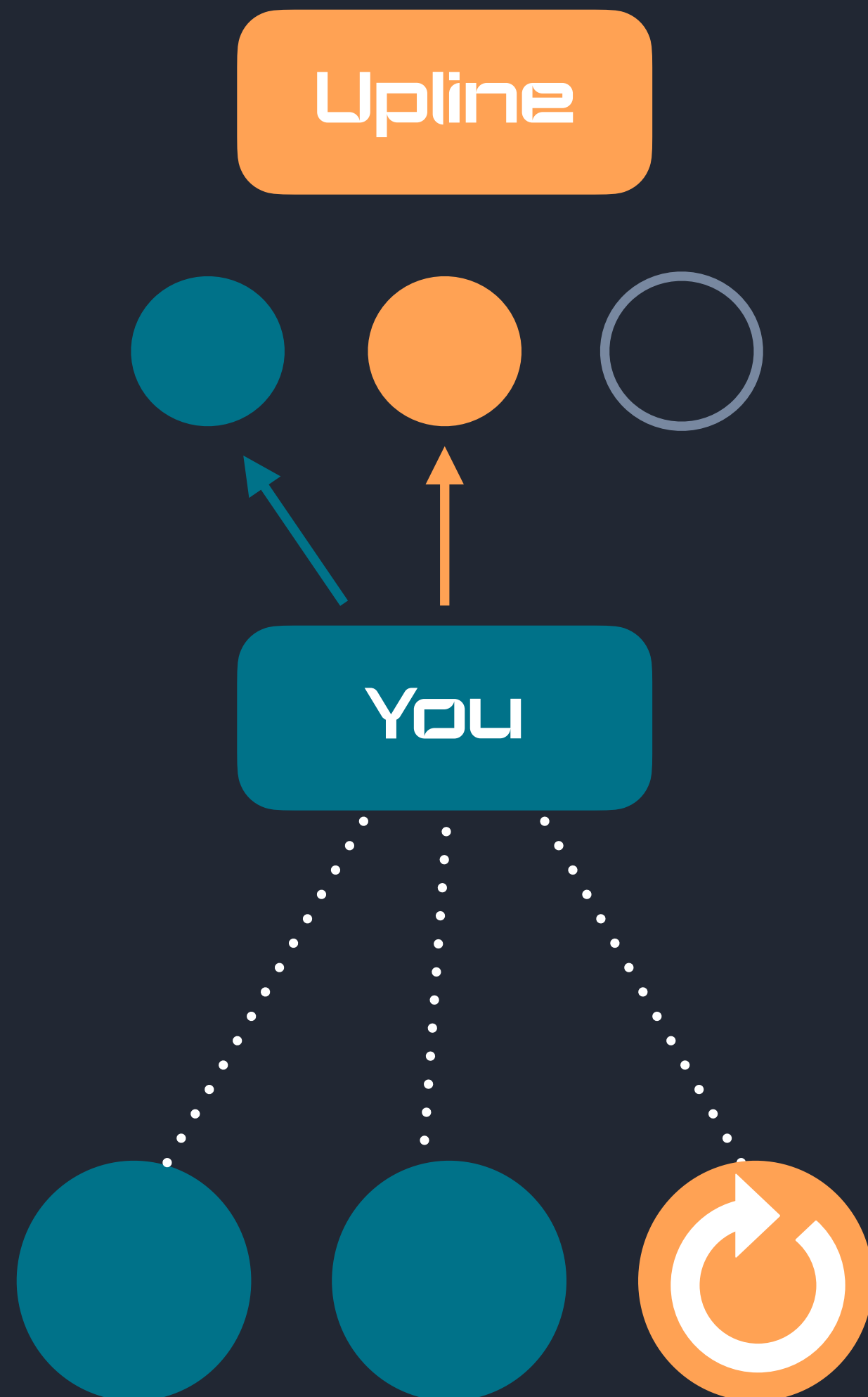
**REINVEST** - this is the re-opening (purchase) of the slot at the current level.

Reinvest opens the same slot for you again, and you continue to receive income from it. Without reinvestment, this slot would close, and that's it. Using smart contract, these slots are emptied to continue the flow of payouts.

Reinvest takes place automatically, as soon as you occupy the last free place, the current slot closes and goes to the archive.

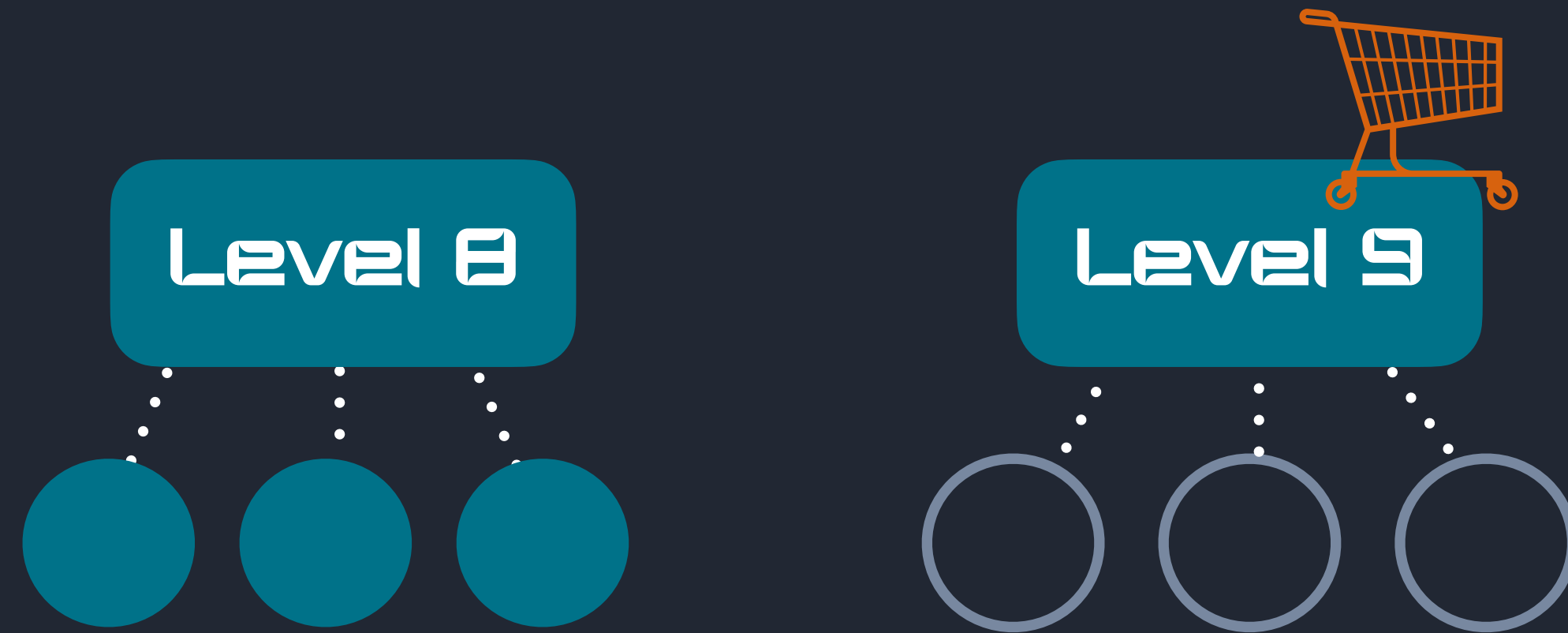
You re-occupy the free space in the slot with your higher partner (upline) and a new slot with free places opens for you, and 100% payment of that particular slot goes to your upline.

Similarly, your referred partners below you will have reinvestments, and you will instantly receive income every time there is a reinvestment.





# What is upgrade?



**UPGRADE** - is the opening (purchase) of the next slot of a more expensive level. It is done once at the first opening of the slot. The payment goes to your upline, provided that your immediate upline has a slot open in this level.

You can decide whether to purchase/upgrade to the next level slot. Reinvestment of the already bought slot occurs automatically but upgrade is not automatic. If the next level slot is not bought by you, then from the second round, after reinvestment, all payouts will be redirected to an upline with that level slot open.

When you buy the necessary slot, then at the next reinvest your referral partner will take place below you and with each reinvest you start getting payouts for that level slot.



**Lost Profit** - payment left to a higher partner (upline), due to lack of upgrade to the next level slot.



**Extra Profit** - payment received to you at the expense of the lost profit of a lower level partner (downline).

# OVERFLOWS, OVERTAKING & RETURNS

You can overtake your superior partner (upline) by opening up next level slots which s/he has not reached/bought yet.

In this case, you get up to his/her upline, the closest who has such level open, and the income goes to him/her.

If that upline doesn't have this slot open, then in the same way you are already overtaking two splines until the smart contract finds a upline partner who already has this level slot active.

Referral link returns the partners. This means that when you upline buys this slot, then in the next reinvest, you will return to take a place below him.

# REFERRAL PAYOUTS (IN USDT) \*\*\*

Levels	B3 MATRIX		B6 MATRIX	
	Price	Profit	Price	Profit
1	2	6	2	8
2	4	24	4	32
3	8	66	8	88
4	16	156	16	208
5	32	342	32	442
6	64	720	64	960
7	128	1482	128	1976
8	256	3072	256	4076
9	512	6078	512	8104
10	1024	12276	1024	16288
11	2048	24498	2048	32664
12	4096	49068	4096	65424



## \*\*\* DISCLAIMER

The calculations are underestimated and made at the very minimum indicators. The profit column indicates the minimum income from each partner who has reached 12 levels of each matrix.

This program does not guarantee you referral income unless you actively engage in bringing referral buys in the matrix. The more you refer, the more you earn.

&

The more everyone in the matrix refers, the more everyone earns.

# TERMS & DEFINITIONS

**Superior Partner (Upline)** - A wallet whose referral link you registered under.

**Referral Partner (Downline)** - A wallet/partner registered with your own referral link.

**Upgrade** - is the voluntary opening (purchase) of the next slot of a more expensive level in a matrix

**Reinvest** - is an automatic re-opening (purchase) of the slot of the current level

**Lost Profit** - payment left to a higher partner, due to lack of upgrade to a more expensive slot

**Extra Profit** - payment received to you at the expense of the lost profit of a lower partner

**Overflow from a superior** - a partner of your superior partner who has closed a place in your slot.

**Overflow from a downline** - a partner of your downline who has closed a place in your slot.

**Overtaking** - the purchase by a lower partner of a more expensive slot, which you don't have yet.